

MOORING

with style and safety

*Our rubber's strength, flexibility
and durability are ideal for
first-class mooring equipment*





Let us help you to a smooth and secure mooring

Mooring can be tricky, especially in unknown waters or unstable weather conditions. The lines must be strong, and in good shape, so easy maintenance is always a factor to consider when equipping your boat. High-quality compensators are equally important as they absorb tension and relieve sudden tugs caused by wind or surf. However, you don't want to spend too much time attaching and adjusting them, not in bad weather. That's why easy handling is as important to our designers as effect and durability. And that's what mooring with style and safety is about.

Unimer is a Swedish company that designs and markets high-quality plastic and rubber products, giving seafarers a smooth, flexible and durable option to traditional mooring products. This brochure showcases our exclusive range of innovative mooring equipment, and because good skills are imperative, we have added a practical guide to safe mooring.

Have a great day at sea!

DRAINMAN – Powered by nature

You'll never scoop water again

Easily fitted to a mooring line and powered by the sea, Drainman might be the most appreciated invention in boatmanship since the oar. While you are onshore or sleeping in your bunk, Drainman quietly drains about 100 liters of water in an hour. Can you find a more convenient and safe solution?

The sea has all the power

The sea is an incredible force, so why use costly batteries or poisonous fuel to run a simple water pump? Drainman is powered by the movements in the mooring line created by surf, waves, and wind, saving you money and reducing your environmental footprint.

Silent, effective, and continuous

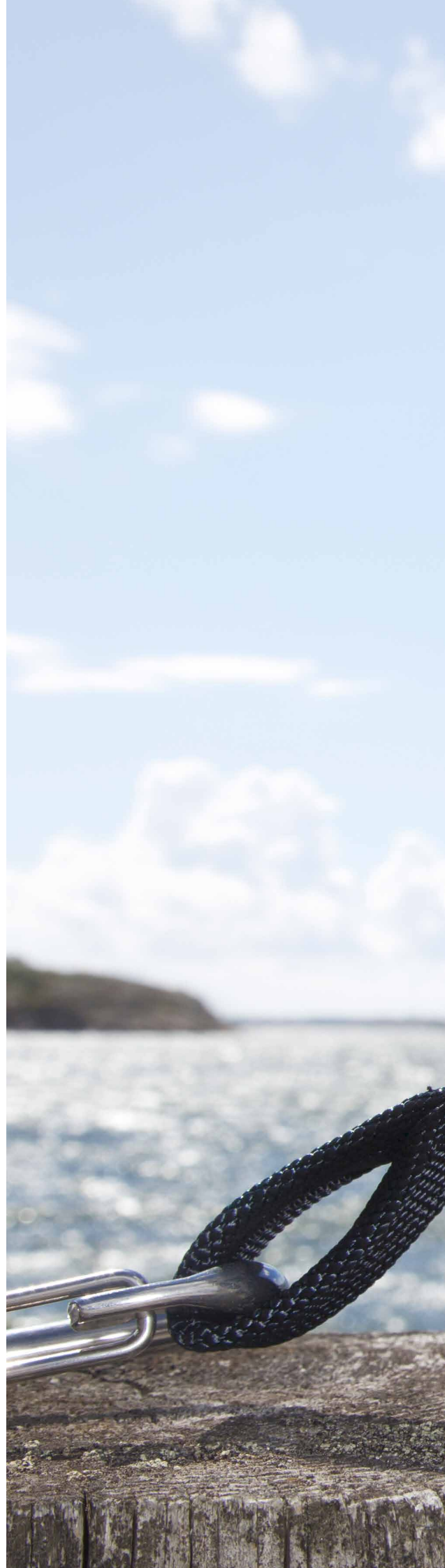
Drainman is a reliable and convenient alternative to arduous bailing or noisy and overheating water pumps. Drainman is so small that you can carry it in your pocket, yet it will continuously pump 2,500 liters in 24 hours (self-priming). A boost for safety!

Easy installation and great reach

Simply attach Drainman to a mooring line around your boat or between your boat and a dinghy. The suction hose measures 6 meters with the extension, and the suction height is an impressive 2,5 meters.

Swedish made for strength and durability

Drainman withstands forces up to 15,000 Newton, and it is equipped with a neoprene cover for protection against sunlight, wear, and tear – this guy will be a reliable friend for many years.



Item

Hose length

Drainman	3 m
Drainman extension hose	3 m



Advanced rubber and plastic
technology from Sweden



The silent compensator you attach directly on the line

Unlike traditional compensators, U-cleat is easily fitted directly on the line without a free end. That makes it a lot easier to install, adjust and remove your compensator, particularly in difficult circumstances. Furthermore, its elastic rubber of the highest quality gives you outstanding compensation without annoying squeaks.

Easy fitting and repositioning with unique locking mechanism

The unique locking mechanism allows easy fitting to a line with eye splices or thimbles on both ends, which is very convenient when you need to make a quick change. And maybe you will wash your lines more regularly when U-Cleat is so easy to remove and refit?

Elastic rubber for smooth and silent compensation

U-Cleat is silent, flexible and smooth, giving you excellent compensation without annoying squeaks or scratches. That's mooring with safety and style!

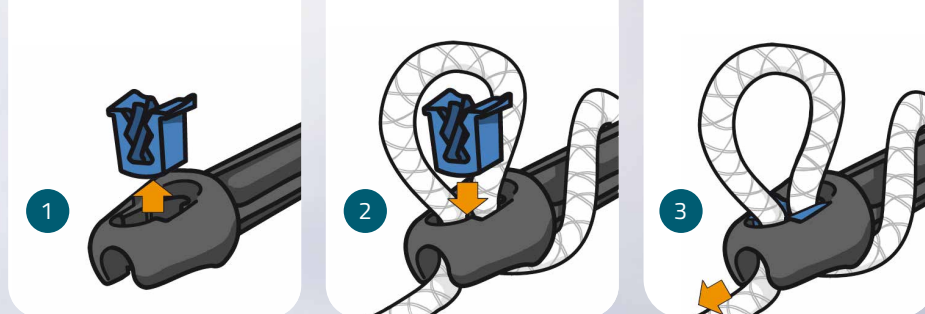
First-class material for any weather

The design-protected U-Cleat Mooring Compensator is made of high-quality EPDM rubber with glass fiber reinforced polyamide inserts molded together with the rubber. The cleats are made of glass fiber reinforced polypropylene.



Line dimensions Length

10-12 mm	329 mm
12-16 mm	412 mm
16-20 mm	516 mm



An unique removable locking mechanism allows easy fitting without a free end of the line.



Advanced rubber and plastic
technology from Sweden





Line dimensions	Length
Up to 16 mm	70 mm
Up to 20 mm	87 mm



Snap-on compensator for fast relief

You might know compensators as rather cumbersome, causing problems when mooring in odd places or suddenly realizing that you need adjustment. Did you misjudge the tide? No problem. The pocket-sized Smart Snubber is easily fitted directly onto the line, giving you fast and efficient compensation when needed.

Get a perfect result

Since Smart Snubber is fitted directly onto the line, it doesn't require any free end, allowing easy adjustments by repositioning or adding more Smart Snubbers to the same line for a perfect result.

Keep it in your pocket

With its small size and easy fitting Smart Snubber is ideal for day cruises and temporary mooring in natural harbors where you need fast and efficient relief.

Strong and elastic material

The Smart Snubber is made of a special polyurethane with outstanding durability and stretchability that will do the job in all weather conditions, even after years of use.

MOORING COMPENSATORS

More mooring compensators

There is a perfect Unimer compensator for every need and style. Each product comes in different sizes so that you can choose the best fit for your boat, and as every size takes different line diameters, you can vary your lines with changing conditions. All our compensators are made of high-quality EPDM rubber, providing superior strength and weather and saltwater resistance.



Unimer Mooring Compensator

The Unimer Mooring Compensator provides cushioned relief for mooring lines, pier, and deck fittings. A cleat-shaped locking mechanism prevents slipping, and the self-locking internal elements in black polyamide stop chafed lines completely, which increases the line’s lifespan and ensures efficient relief.



Line dimensions	Length
10-12 mm	332 mm
12-16 mm	416 mm
14-18 mm	520 mm
20-24 mm	600 mm

Unimer Mooring Kit

This is a complete mooring kit with two pre-assembled Unimer Mooring Compensators with spliced thimble dock lines, all nicely packed in a durable drawstring bag. Note that dealers may create unique kits with high-quality, braided, three-stranded polyester mooring lines.



Line dimensions	Length
8-10 mm	156 mm
12-14 mm	250 mm
16-20 mm	300 mm

Inline Mooring Compensator

The Inline Mooring Compensator has a thin, contoured design without compromising safety and efficiency. With the line running aligned with the compensator, the Inline is small and easy to stow – perfect if you have a small boat or often moor in tight spaces, such as small natural harbors or between Y-bars. The compensator is made of high-quality EPDM rubber.



Line dimensions	Length
8-10 mm	156 mm
12-14 mm	250 mm
16-20 mm	300 mm

Classic Mooring Compensator

Sometimes you want to go for the classic look. Like the In-line Mooring Compensator, the line runs aligned with the compensator, making it perfect for mooring in tight spaces and easy to stow if you have a small boat. The Classic Mooring Compensator is made of the same high-quality EPDM rubber as all our mooring compensators.



Line dimensions	Length
10-12 mm	156 mm
12-16 mm	250 mm
14-18 mm	300 mm

BOAT COVER FASTENINGS

Cover your boat safely

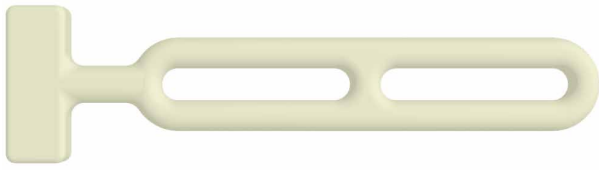
When the season is over, it's time to ensure your boat is safe for the winter. We offer a wide range of rubber tensioners and accessories for boat covers.

Our tensioning straps are made of weather and aging-resistant black or white EPDM rubber that doesn't discolor and natural rubber with high elasticity.



BOAT COVER FASTENINGS

Strap T160

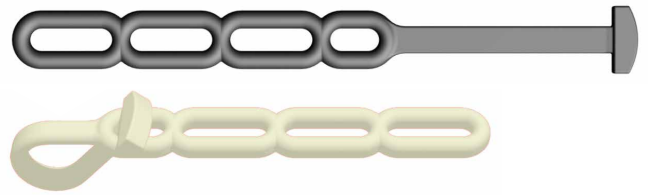


Line dimensions

Length

Strap T160 White EPDM, 50 sh	332 mm
------------------------------	--------

Combi 11

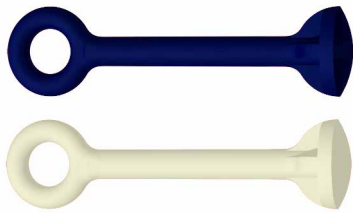


Line dimensions

Length

Combi 11 Black EPDM, 55 sh	280 mm
Combi 11 White EPDM, 55 sh	280 mm

Cover spring



Line dimensions

Length

Cover Spring Black EPDM, 70 sh	65 mm
Cover Spring White EPDM, 70 sh	65 mm
Cover Spring Dark Blue EPDM, 70 sh	65 mm

Boat cover ring



Line dimensions

Length

Boat Cover Ring Black EPDM, 60 sh	61 mm
Boat Cover Ring White EPDM, 60 sh	61 mm
Boat Cover Ring Dark Blue EPDM, 60 sh	61 mm

Plastic nob

Line dimensions

Length

Knob Black PP, incl. galvanized screw	12 mm
Knob White PP, incl. galvanized screw	12 mm
Knob Grey PP, incl. galvanized screw	12 mm



It's an old rule among sailors – always moor your boat for a storm

Your own skills and the right gear can be the difference between a smooth mooring and a disaster, so here is a practical guide with essential knowledge and handy tips.

Piers and marinas

Yacht clubs and insurance companies encourage using compensators on your mooring lines because they protect the pier and its fittings as well as the boat and the lines.

When mooring at a pier, fasten your mooring line at the height of the pole that best suits the water level. Observe that changes in water levels may cause the lines to slack, so you need a certain distance between the pier and the boat to prevent damage.

When mooring at floating pontoons, it's crucial to use high-quality mooring compensators, as the boat and pier constantly move due to wind, sea and surf.

Mooring lines

Mooring lines must have high tensile strength and resistibility against tears, tugs and sunlight. There are several different synthetic mooring line materials – always use a long fiber line made of polyester or polyamide for long-term mooring and ensure the line diameter matches your fittings.

Fittings

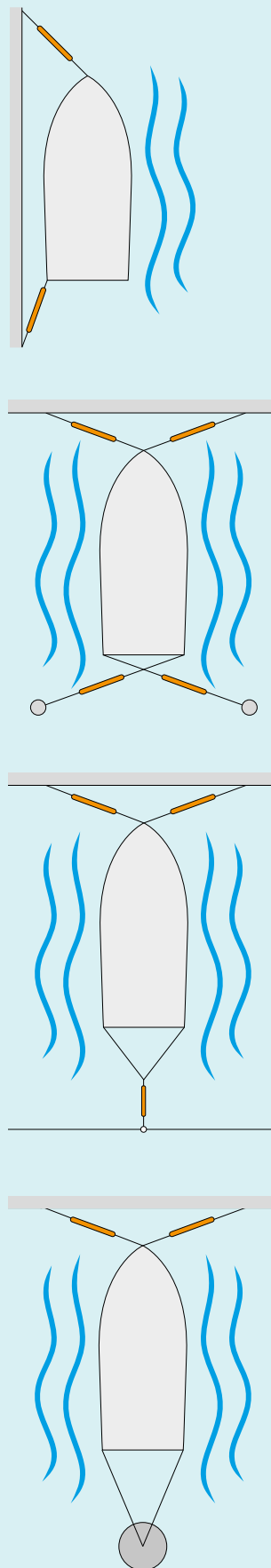
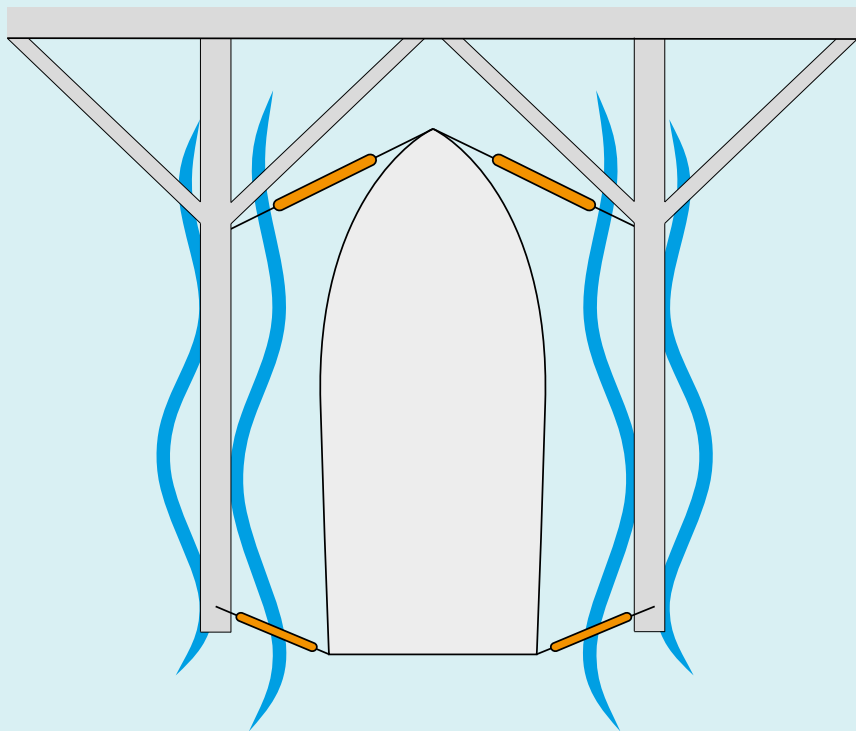
Proper fittings are essential to a safe mooring. Therefore, all fittings, such as boar cleats and eye- and ring bolts, must be sturdy and properly fitted to endure larger than regular strains, for example, when towing or mooring in extreme weather.

Compensators

High-quality mooring compensators absorb tension and relieve line, deck and pier fittings from sudden tugs. Remember that the compensator must match the size of the mooring line. (See the millimeter-to-inch converter).

Traditional mooring compensators are made of a large steel spring. The spring is prone to rust and squeaking and requires a safety wire in case the spring should break. Most modern compensators are made of rubber with good elasticity and tensile strength without losing its original shape and don't rust or squeak.

Today, most rubber compensators are made of EPDM rubber, a synthetic material with excellent weather resistance.



Most rubber compensators on the market must be threaded when fitted to the line. However, some products – such as Unimer’s U-Cleat Mooring Compensator and Smart Snubber – do not require a free end, giving you plenty of options over a conventional compensator. The compensator can easily be repositioned after fitting, transferred to another line, or attached to a line with eye splices or thimbles on both ends. Smart Snubber can even be connected to already fastened lines.

So, what type of compensator should you use? It all comes down to how you use your boat, its weight, and the conditions where it’s typically moored. Remember that compensators are especially important when mooring:

- where there’s a risk for sea and surf
- where the effects of tide are strong (significant water level differences between high and low tide)
- at floating pontoons, as they will move in a different rhythm than the boat

Use this ruler to convert millimeters to inches or the other way around.



The figures above show five everyday mooring situations with their recommended line and compensator configuration.

From easy day outings to rough seas – Unimer lets you moor with style and safety

Unimer is a Swedish company working with advanced manufacturing methods in rubber, plastic, and polyurethane at the cutting edge of rubber technology. As a result, sailors, fishermen, and professional seafarers around the world can tell you that our supreme selection of innovative products for mooring and drainage offers high quality, enhanced functionality, and an attractive design.

Learn more at www.unimer.se

